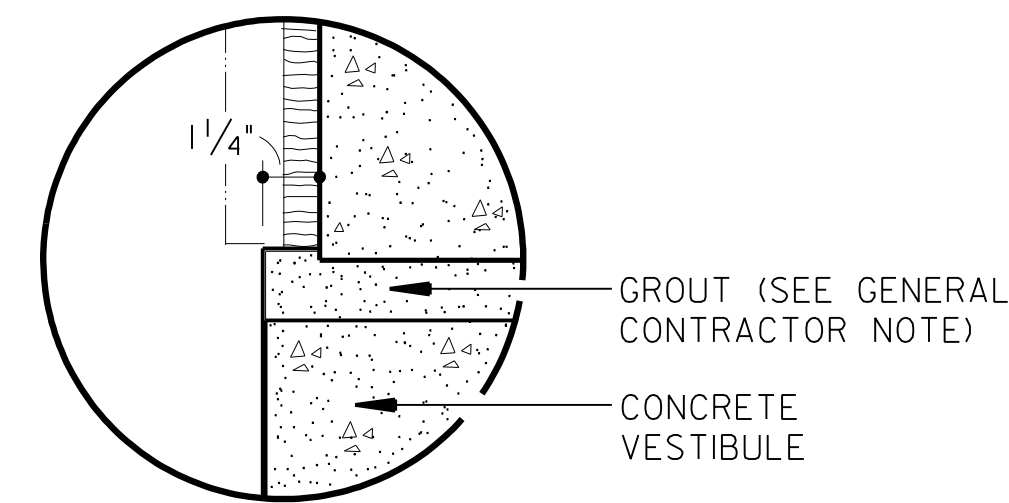


DETAIL "A" DETAIL "B"
SETTING DETAILS FOR DOOR WITHOUT CLADDING

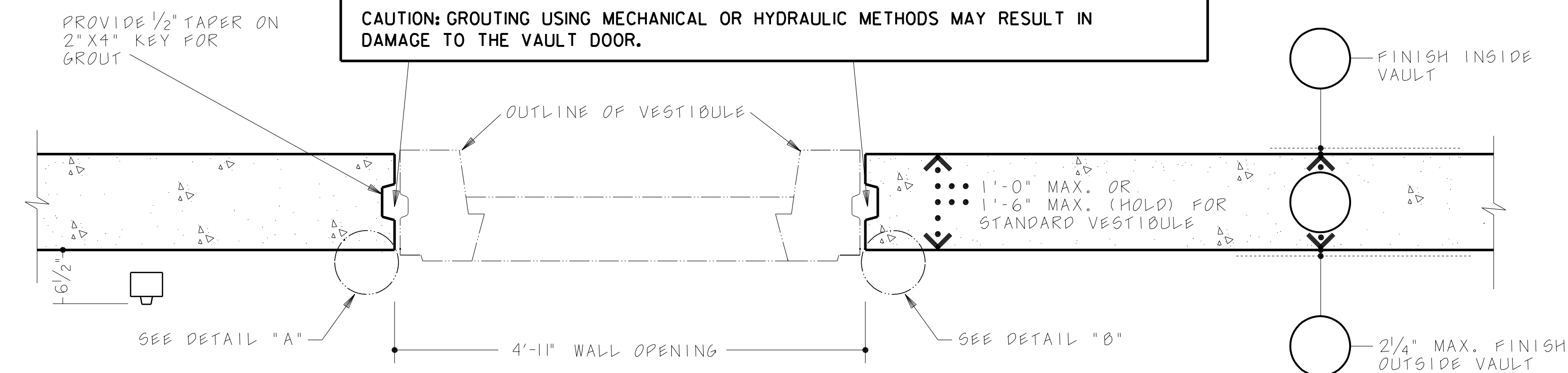


DETAIL "C"

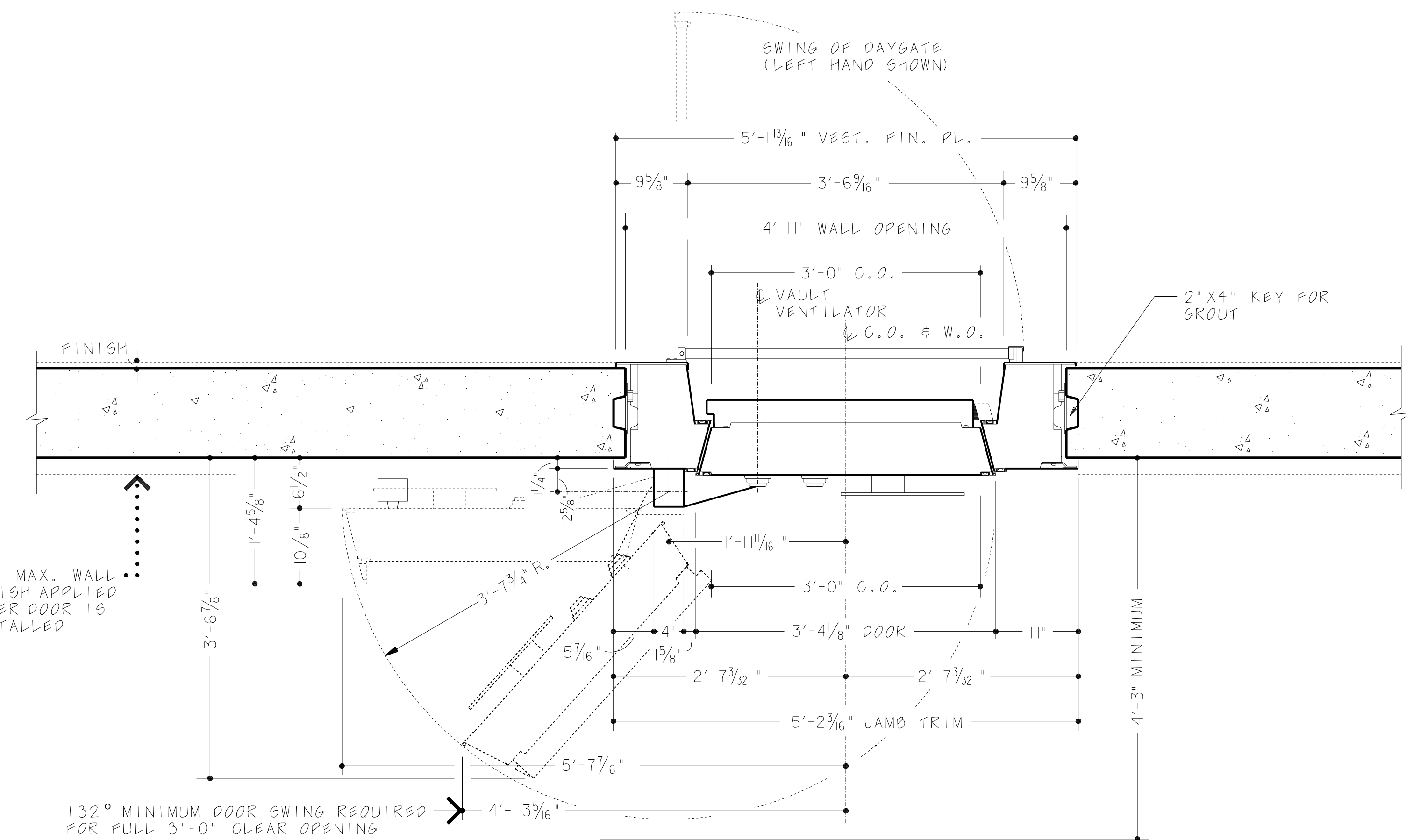
GENERAL CONTRACTOR NOTE

IT IS "MANDATORY" THAT THE OWNERS GENERAL CONTRACTOR GROUT IN THE SPACE BETWEEN VESTIBULE AND CONCRETE WALL AFTER VAULT DOOR IS INSTALLED BY DIEBOLD. GROUT TO CONSIST OF CLEAN SAND AND CEMENT USING FORMULATION TO PROVIDE AT LEAST 3,000 P. S. I. (EQUIVALENT TO 6 BAG MIX).

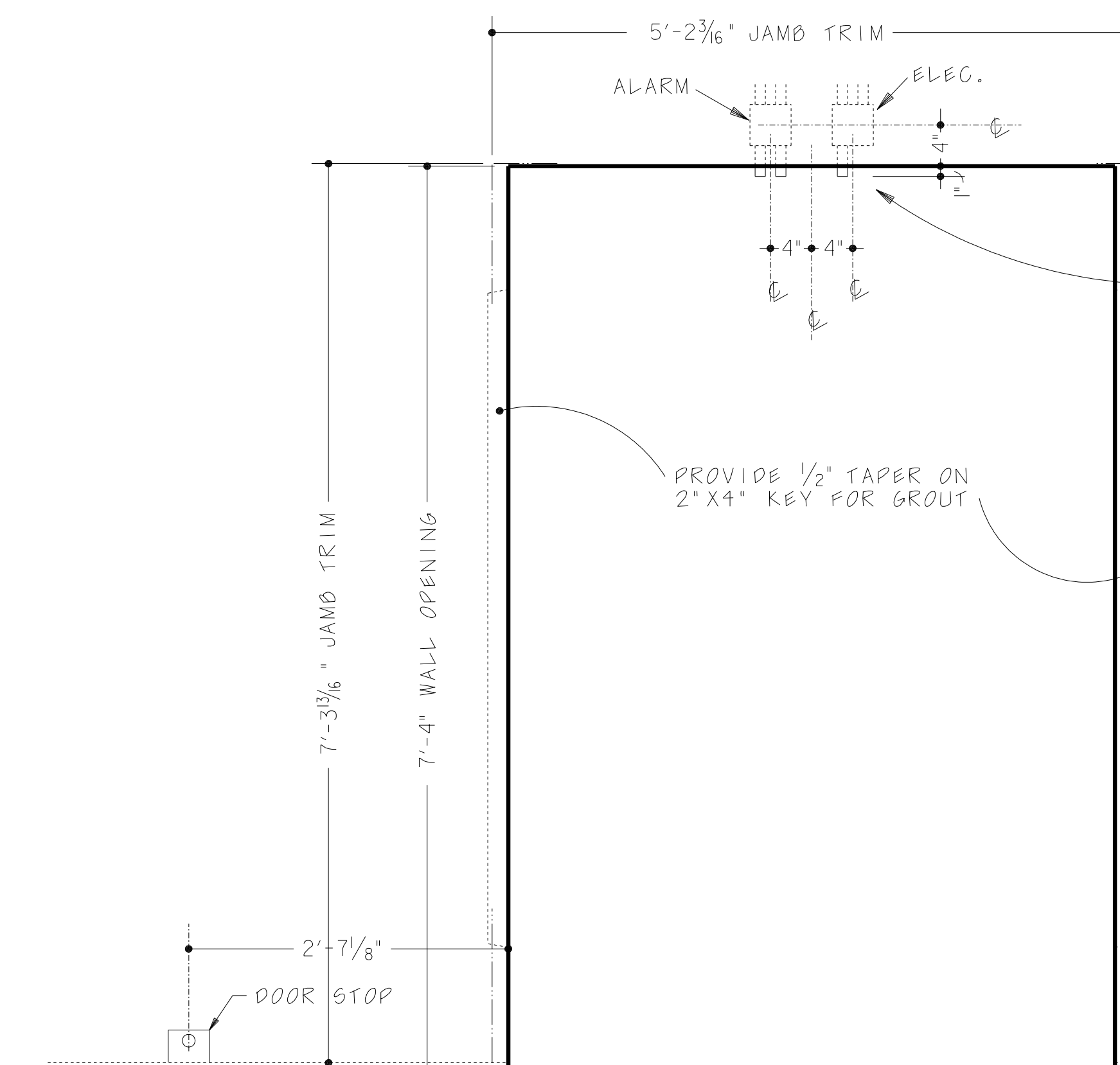
CAUTION: GROUTING USING MECHANICAL OR HYDRAULIC METHODS MAY RESULT IN DAMAGE TO THE VAULT DOOR.



PLAN VIEW



PLAN VIEW



FRONT ELEVATION

ELECTRICAL CONTRACTOR TO PROVIDE:

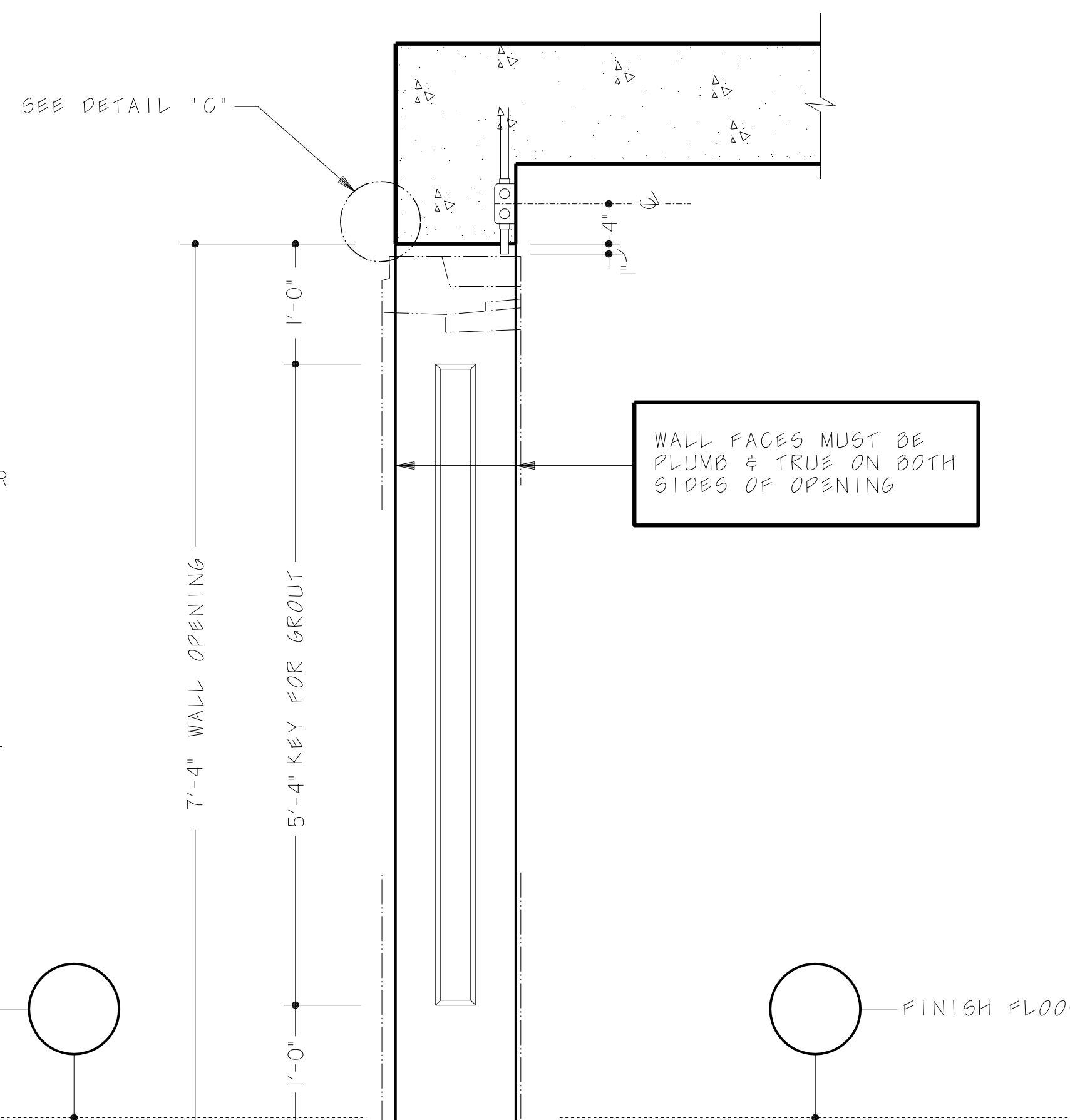
FOR ALARM SYSTEM

- (1) 1" CONDUIT FROM ALARM CONTROL CABINET TO 4" SQ. X 2 1/8" DP. JUNCTION BOX WITH FLAT COVER
- (1) 3/4" CONDUIT TO AIRLOCK (WHEN SPECIFIED)
- (2) 1/2" CONDUITS WITH STANDARD THREADS TO STUB OUT 1" INTO WALL OPENING

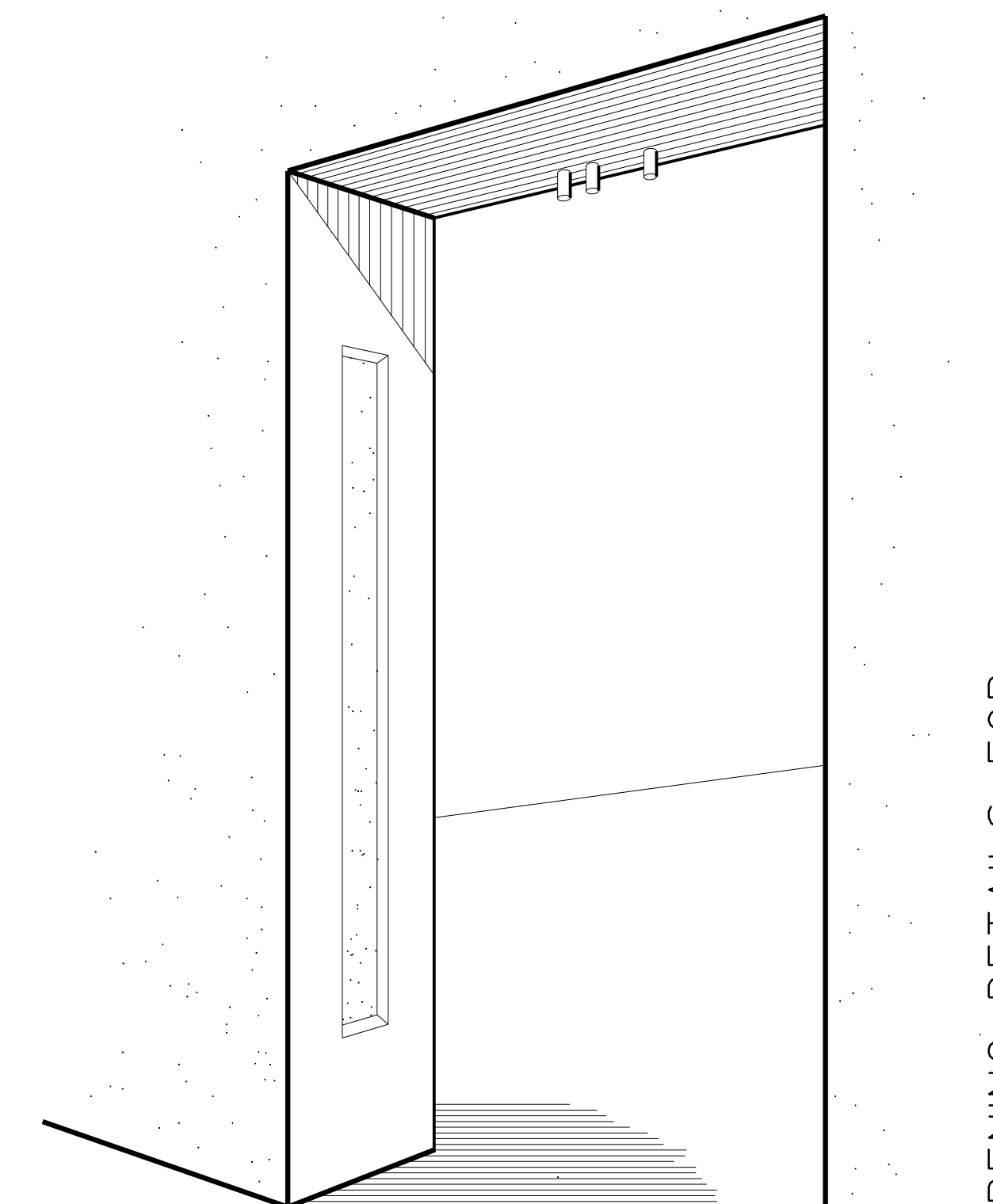
FOR ELECTRICAL SUPPLY

- (1) 3/4" CONDUIT TO 4" SQ. X 2 1/8" DP. JUNCTION BOX WITH FLAT COVER. (1) CIRCUIT 120 VAC, 60 HZ, SUPPLY WITH GREEN WIRE FOR EQUIPMENT GROUNDING (UNSWITCHED CIRCUIT) MAX. CURRENT EQUALS 1.0 AMP
- (1) 3/4" CONDUIT TO AIRLOCK (WHEN SPECIFIED)
- (1) 1/2" CONDUITS WITH STANDARD THREADS TO STUB OUT 1" INTO WALL OPENING

NOTE: FINISHED FLOOR LEVELS INSIDE AND OUTSIDE VAULT MUST BE THE SAME.



SECTION



PERSPECTIVE

WALL OPENING DETAILS FOR #154-48 CLASS 2 TITAN VAULT DOOR - LEFT SWING